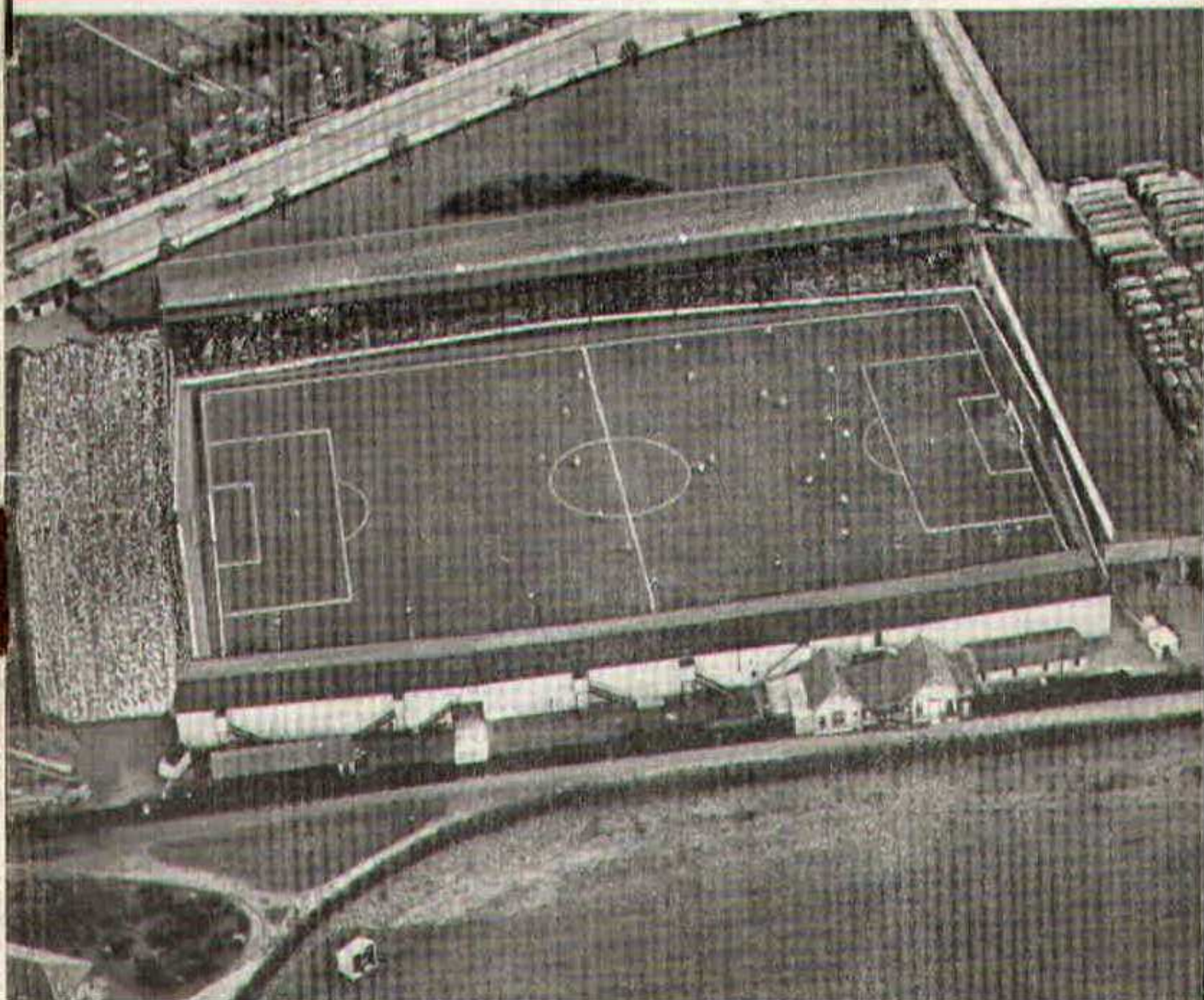


# SWINDON TOWN



## FOOTBALL CLUB

OFFICIAL PROGRAMME 6d.





**FURNITURE AND FURNISHINGS  
OF CHARM AND DISTINCTION**



CARPETS - FLOORCOVERINGS  
LOOSE COVERS - CURTAINS  
SKILLED WORKSHOP REPAIR SERVICE  
AND REMOVALS



Contractors to Government Departments, Hospitals  
and Borough Councils

**MILLS & MERRICKS LTD.**

**16-17 BRIDGE STREET, SWINDON**

TELEPHONE 5365/6

**TUESDAY, APRIL 30th, 1963**

**Division III**

**SWINDON TOWN**

*v.*

**CARLISLE UTD.**

**Kick-off 7.30 p.m.**

**REFEREE:**

**Mr. H. G. NEW (Havant)**

**LINESMEN:**

**Red Flag -**

**Mr. F. G. PERKINS (Farnborough)**

**Yellow Flag -**

**Mr. S. J. TURNELL (Bristol)**



for fine printing  
you should have  
a fine printer

**BOROUGH PRESS (SWINDON) LTD**

## **Maylott Studios**

For **GROUP & SPORT** Photographs

Official Photographer to  
Swindon Town Football Club

**31 FARINGDON ROAD**

TEL. 22792

## **NOTTON'S CAFE**

**COUNTY ROAD**

200 yards from Ground

**RIGHT ON THE BALL**

## **C. DUNN & SON**

**BUILDERS & DECORATORS**

Alterations, Renovations, Conversions

Plumbers & Sanitary Engineers

**503 CRICKLADE ROAD**

TEL. 22522

## **LEESE, ING & Co. Ltd.**

Mineral Water and  
Squash Manufacturers

**Lansdown Rd., Swindon**

Telephone 22744

"COAL"  
"COAL"  
"COAL"

## **J. WILMER**

**ST. MARGARET'S ROAD**

**SWINDON**

Telephone 22535

## **L. Wollen**

OFF LICENCE

**WINES and SPIRITS**

Arkell's Ales and Stout

**373 Cricklade Rd., Swindon**

Deliveries Daily

Phone 3508



# SWINDON TOWN FOOTBALL COMPANY LIMITED

Registered Office: COUNTY GROUND, SWINDON.

## Directors:

Mr. W. J. CASTLE (Chairman)                      Mr. H. E. LANE (Vice-Chairman)  
Mr. B. T. HAMILTON (Hon. Treasurer)      Messrs. C. CHANDLER, J.P., J. DAVIES,  
R. FRICKER, C. J. GREEN, F. PLYER, H. WILLIAMS and K. H. WILMER  
Manager: B. J. HEAD                                      Secretary: R. A. MORSE

---

VOL. 13

TUESDAY, APRIL 30th, 1963

No. 26

---

## CLUB NOTES

A splendid beginning to the run of three consecutive home games. Possibly one of the best games seen at the County Ground this season. A hard, fast game, moving quickly from end to end. One moment the home team goal in danger, the next the visitors'. So it went, right to the final whistle, excitement and tension to the end. The last ten minutes saw desperate efforts by Bournemouth, and everyone on the ground held their breath when the ball rolled past the home goal upright.

Swindon's first goal, scored by Stevens, was probably the finest we have ever scored. A long pass upfield from our own penalty area to Jackson just inside our half. Another long pass to Ernie Hunt, who lobbed it first time over the head of the centre-half for Stevens to run on and hit the ball first time past the advancing goalkeeper — a great goal! Bournemouth's equaliser, two minutes later, was also a splendid effort. A long



# WILSONS (SWINDON) LTD.

BUILDERS OF MODERN ATTRACTIVE  
HOUSES AND BUNGALOWS

Enquiries to:

**Head Office:** 90 COMMERCIAL ROAD, SWINDON 6361

**Site Office:** COVENTRY FARM ESTATE, WROUGHTON 271

**Site Office:** QUEENSFIELD ESTATE, STRATTON S.M. 3405

The Rendezvous of all Sportsmen -

## THE CROWN INN

(Host: Frank Plyer)

Arkell's Best Ales : Fully Licensed

Snacks, etc.

Stratton St. Margaret Tel. 2339

Always at your service

## L. BIBBY

For all Types, Rags, Iron and Metal,  
etc. Spot Cash Paid. Please Tel.  
2101 and our van will call.

THE PADDOCK, ERMIN STREET  
STRATTON ST. MARGARET

FISH

POTATOES

**T. QUALITY (Swindon)**  
LTD.

Wholesale Merchants

**COLLEGE STREET**

TEL. 5446/7

For Best Quality Wet Fish  
9 a.m. - 6 p.m. (except Mondays)

## YORK ROAD FISHERIES

Frying Mid-day Tuesday, Thursday,  
Friday and Saturday

Phone 3680

# MARSHGATE GARAGE

MOTOR ENGINEERS :: ROOTES GROUP DEALERS

**STRATTON ROAD - SWINDON - WILTS.**

Tel. Swindon 22788

TWO MINUTES FROM GROUND



## CLUB NOTES - continued

pass from player-manager McGarry to the left winger Crickmore (who played splendidly in the first half), an excellent centre to the penalty spot for the ball to be headed first-time into the net.

We thought Bournemouth a well-balanced side, which played fast, open attacking football.

Their officials were most sporting after the match. Although the defeat was a blow to their hopes, they were most generous in their praise and best wishes for future success and promotion. Thank you, Bournemouth; we shall certainly miss you, should we be fortunate enough to "go up". Many people present thought a draw would have been a fair result. Bournemouth enjoyed most of the game in the first half, but for long periods in the second half Swindon certainly held the upper hand and might easily have scored on several occasions but for good goalkeeping by Best.

After this evening's game, we have four more matches, two home and two away. On Saturday next we play Halifax at home, and on the following Monday travel to play Colchester. Then a break for eight days until we meet Shrewsbury at home on Tuesday, 14th May (another "bogey" team), and finally play at Hull on Saturday, 18th May. Two more points this evening will help towards our ultimate aim. How nice if we could win all our remaining games! A repeat of Saturday's performance will do. Good Luck, Lads!



# **PANKHURST**

**The Palace - Gorse Hill - Swindon**

**MOTOR CYCLE - SCOOTER AND  
THREE-WHEELER SPECIALISTS**

Open Mon. to Sat. 9 a.m. - 8 p.m.

Phone 5466

---

Their kit is supplied by

**SWINDON SPORTS CENTRE**

WHO HAVE THE BEST SELECTION

Tel. 4270

114 COMMERCIAL ROAD

---

**IVOR MESSENGER & SONS**

**High-Class Family Butchers**

QUALITY WITH ECONOMY :: FAIREST PRICES IN TOWN

**1 COLLEGE STREET, SWINDON**

Tel. 5647

---

**£10 TYPEWRITERS from £10**

FULLY GUARANTEED

Also full selection new standard and portable typewriters  
OFFICE EQUIPMENT

**DOBELL SHEARMAN**  
**& Co. Ltd.**

26 High Street & 33 Faringdon Road, Swindon.

Tel. 4961/2





**W. HARBER**



## OUR VISITORS

This evening we welcome to the County Ground both the team and officials of Carlisle United.

When the teams met in a previous encounter, after a hard struggle, a goalless draw resulted.

Founded 1903 by the amalgamation of "Carlisle Red Rose" with Shaddongate United; elected to League Division III (North) in 1928. Members of Division III (North) 1928-39 and 1946-58. Division IV 1958-1962. Division III 1962.

Highest League positions: 3rd in Division III (North) in 1950-51 with 62 points from 46 games and 4th, resulting in promotion from Division IV, in 1961-62 with 52 points from 44 games. Only once has the Club had to apply for re-election to the League and that was way back in 1934-35.

Ground—Brunton Park—present capacity in the region of 30,000. Record attendance: 27,500 v. Birmingham City in 3rd Round F.A. Cup in 1957. Highest League attendance: 17,339 v. Hull City in 1948.

Colours: Blue and white hooped shirts, white shorts, blue and white stockings.

During 1962/63 the Club has run three teams, 1st Team in the Football League, 2nd Team in North Eastern League and Youth Team (under 18) in Carlisle City Youth League.

Following are pen-pictures of the players from whom tonight's team will be selected:

### **JOE DEAN (Goalkeeper)**

Joined Carlisle in July 1962 after six seasons with Bolton Wanderers, for whom he signed professional on his seventeenth birthday. Was a schoolboy international. Born Manchester. Height 6ft. 1in. Weight 13st. 8lb.

### **TERRY CALDWELL (Full Back)**

Struck an excellent understanding with right back Hughie Neil during 1961/62 season and together formed one of the best defensive combinations the Club has ever had. A very strong tackler and forceful player who joined United in July 1961 from Leeds Utd., after previous service with Huddersfield Town. Born Wakefield. Height 5ft. 10in. Weight 11st. 10lb.



For Quality **FLOWERS - FRUIT - VEGETABLES**  
also **FROZEN FOODS**

## **CLARKE'S of Old Swindon**

Proprietors: A. G. G. and J. A. W. HUNT

**64 DEVIZES ROAD - SWINDON**

**Phone 22337**

**ORDERS DELIVERED**

---

## **SEA VIEW CAMP**

**Camp Road, Wyke Regis, Weymouth. Tel 3351**

Site overlooks Chesil Beach - Ideal for Camping Parties

Also Modern Caravans for Hire

---

## **Swindon Bacon Curing Co. Ltd.**

Specialists in

**BACON - PORK - COOKED HAM**

**50 FLEET STREET, SWINDON**

**Telephone 22122**

---

Meet your friends for an enjoyable evening at

## **THE KINGSDOWN INN**

(Host A. W. Vann)

**FULLY LICENSED - ARKELL'S BEERS**

**SNACKS - Etc.**

**STRATTON ST. MARGARET**

**Tel. 3281**



## **OUR VISITORS - continued**

### **ALAN McBAIN (Full Back)**

Alan, who was born in Aberdeen, first signed professional forms for Swansea Town in 1958. Arrived at Carlisle in the 1960 close season. Has made 26 League appearances during the past two years. Height 5ft. 9½in. Weight 11st. 7lb.

### **JACK MARSDEN (Centre Half)**

Joined United in September 1960 from Barrow in an exchange deal for inside-forward George Fleming. Previously with Leeds Utd., where he was a regular member of the Second Division side. A strong, forceful defender. Very dominant in the air. Born Leeds. Height 6ft. Weight 13st.

### **DAVID OLIPHANT (Wing Half)**

A local boy who spent eighteen months at Wolverhampton, where he gained considerable Central League experience before returning to his home-town club on 30th November 1960. Up to the end of season 1961/62 David had made 69 consecutive League appearances, all at wing-half, scoring eight goals, mostly from penalties. Height 5ft. 7½in. Weight 10st. 4lb.

### **BARRY BRAYTON (Inside Forward)**

Local born. Amateur with the Club from 1956 to 1960. Signed professional forms in January 1960. Barry has had considerable first-team experience at both inside and wing-forward. A part-time player. Height 5ft. 7in. Weight 10st. 4lb.

### **LES DAGGER (Outside-Right)**

Joined United from Preston in June 1961 and was an ever-present last season. Les had considerable First Division experience during his five years at Deepdale. Before signing for North End played as an amateur in the Northern League with West Auckland Town. Born Preston. Height 5ft. 7in. Weight 11st. 4lb.

### **GEORGE WALKER (Inside Forward)**

George has been top goal-scorer for United for the past two seasons—16 in 1960/61 and 20 in 1961/62. Arrived at Brunton Park from



## **OUR VISITORS—continued**

Bristol City, his only other League club, towards the end of the 1958-59 season. Has operated in both inside-forward positions and at centre-forward. Possesses a powerful shot and is exceptionally good in the air. Born Sunderland. Height 5ft. 10in. Weight 11st. 7lb.

### **HUGHIE NEIL (Full Back)**

In his second season at Brunton Park, having joined the Club in June 1961 after spells with Falkirk, Rangers and St. Johnstone. A very consistent player and a "footballer" in the truest sense of the word. A great favourite at Brunton Park. An ever-present in the League side during 1961/62. Born Lugar, Ayrshire. Height 5ft. 11in. Weight 11st. 7lb.

### **ALEC McCALL (Wing Half)**

Signed as a professional in September 1958. Has just completed his two years' National Service. A part-time player. Born Annan, Dumfriesshire. Height 5ft. 11in. Weight 11st. 7lb.

### **GARBUTT RICHARDSON (Centre half)**

Born Newcastle. Spotted by Huddersfield Town in 1954 and remained with the Leeds Road club until 1957, when he moved on to Preston. Played a number of first team games for North End and moved the short distance to Accrington at the commencement of the 1961/62 season. Was on the injured list when Accrington dropped out of the League. Signed for Carlisle on a month's trial in July 1962. Height 5ft. 11in. Weight 13st. 10lb.



# **B. J. MARTIN & SONS LTD.**

*Butcher*

**10 HIGH STREET  
MARLBOROUGH  
Phone 212**

**126 VICTORIA ROAD  
SWINDON  
Phone 4860**

## **CLARK BROS. (SWINDON) LTD.**

**BUILDING AND CIVIL ENGINEERING  
CONTRACTORS**

**SWINDON**

**Telephone: Swindon 3417/8/9**

Do not let **CHILBLAINS** spoil a good game

**RELAPERN**

Price 2/6 from your **CHEMIST**

2/10 Post Paid from

**Ballard & Co. (Chemists) Ltd., Faringdon, Berks.**



# DIVISION III

		Home					Away					
	P.	W.	D.	L.	F.	A.	W.	D.	L.	F.	A.	P.
Northampton	42	14	6	1	59	19	9	4	8	41	40	56
<b>Swindon</b>	41	16	1	3	56	21	3	11	7	24	33	50
Peterborough	43	11	5	6	48	29	9	5	7	44	40	50
Coventry	39	14	6	2	54	27	3	9	5	23	31	49
Bournemouth	40	10	10	0	38	16	6	4	10	20	26	46
Southend	40	9	6	4	33	20	8	4	9	36	50	44
Notts Co.	40	14	2	5	37	26	3	8	8	22	40	44
Hull City	39	11	4	4	36	18	7	3	10	32	41	43
Colchester	41	9	6	5	35	31	7	5	9	32	50	43
Port Vale	39	12	4	2	37	18	5	4	12	22	32	42
Q.P.R.	41	9	4	7	41	31	8	4	9	39	37	42
Bristol City	41	9	7	3	48	32	6	4	12	45	51	41
Crystal P.	40	9	5	6	34	21	6	5	9	25	34	40
Watford	41	12	3	6	54	36	4	4	12	21	39	39
Wrexham	39	11	5	3	48	25	5	2	13	26	53	39
Shrewsbury	41	10	4	6	51	40	3	7	11	26	39	37
Barnsley	39	11	5	3	37	20	2	5	13	20	40	36
Millwall	40	9	6	6	43	30	3	6	10	24	45	36
Bristol R.	41	10	7	4	42	28	3	3	14	30	60	36
Bradford	42	9	9	4	40	34	3	3	14	30	55	36
Brighton	43	7	6	9	27	34	5	5	11	30	45	35
Reading	39	11	4	6	46	29	2	3	13	16	38	33
Carlisle	39	9	3	7	32	31	1	5	14	20	45	28
Halifax	40	6	3	10	33	45	1	8	12	21	51	25



# DIVISION III FIXTURE LIST

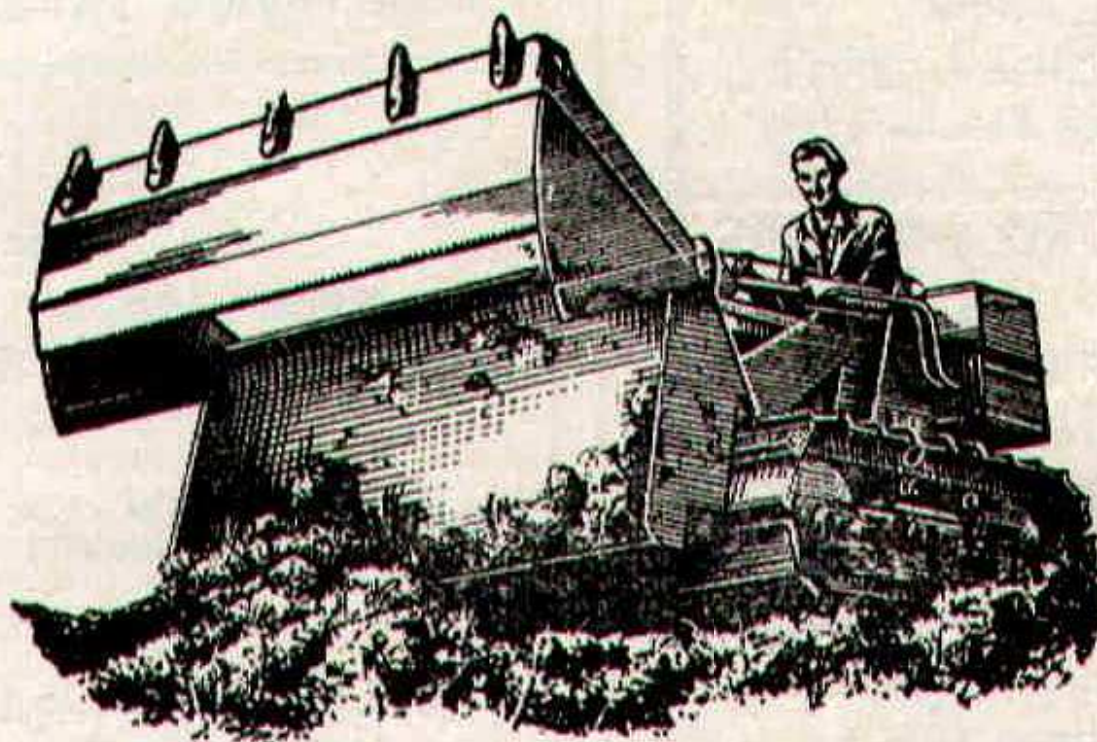
Date	Opponents	Ground	Result
August 18	BARNSELY	(A)	1-1
21	COVENTRY CITY	(H)	4-1
25	NORTHAMPTON TOWN	(H)	2-3
28	COVENTRY CITY	(A)	0-2
September 1	QUEEN'S PARK RANGERS	(A)	2-2
4	BRIGHTON and HOVE ALBION	(A)	1-1
8	HULL CITY	(H)	2-0
11	BRIGHTON and HOVE ALBION	(H)	5-1
15	CRYSTAL PALACE	(A)	0-0
18	CARLISLE UNITED	(A)	0-0
22	WREXHAM	(H)	3-0
25	DARLINGTON (Cup)	(H)	4-0
29	HALIFAX TOWN	(A)	3-4
October 2	BRISTOL ROVERS	(H)	3-0
6	WATFORD	(H)	3-1
9	BRISTOL ROVERS	(A)	0-2
13	BRISTOL CITY	(A)	2-2
20	READING	(H)	1-1
27	PORT VALE	(A)	1-2
November 3	(1) READING	(H)	4-2
10	MILLWALL	(A)	4-3
17	SOUTHEND UNITED	(H)	4-1
24	(2) YEOVIL	(A)	2-0
December 1	NOTTS COUNTY	(H)	3-1
8	BOURNEMOUTH and B.A.	(A)	0-0
15	BARNSELY	(H)	2-1
26	BRADFORD	(A)	0-2
1963			
January 12	QUEEN'S PARK RANGERS	(H)	5-0
19	HULL CITY	(A)	0-0A
26	(3) LUTON TOWN	(A)	2-0
29	(4) EVERTON	(H)	1-5
February 2	CRYSTAL PALACE	(H)	1-0
23	WATFORD	(A)	3-3
27	WREXHAM	(A)	0-0
March 2	BRISTOL CITY	(H)	3-2
8	(6) READING	(A)	2-1
16	PORT VALE	(H)	2-3
23	SHREWSBURY TOWN	(A)	2-1
26	NORTHAMPTON TOWN	(A)	1-1
30	(S.F.) MILLWALL	(H)	1-0
April 2	BRADFORD	(H)	2-1
6	SOUTHEND UNITED	(A)	1-1
12	PETERBOROUGH UNITED	(H)	2-3
13	COLCHESTER UNITED	(H)	6-1
15	PETERBOROUGH UNITED	(A)	1-3
20	NOTTS COUNTY	(A)	0-2
27	BOURNEMOUTH and B.A.	(H)	2-2
30	CARLISLE UNITED	(H)	
May 4	HALIFAX TOWN	(H)	
6	COLCHESTER UNITED	(A)	
14	SHREWSBURY TOWN	(H)	
18	HULL CITY	(A)	



# H. HIBBERD LIMITED

40 NEWPORT STREET - SWINDON

PLANT HIRE



TRACTORS and SCRAPERS

BULLDOZERS

DROT SHOVELS

J.C.B. and DINKUM DIGGERS

ROAD ROLLERS

TELEPHONE: SWINDON 6125



## Hatton's Newsagency

A. J. D. Woodhouse and A. Smith

**Newsagents :: Tobacconists  
Confectioners**

**Agents for Wessex School of  
Motoring**

**Main Booking Agents for Millers  
Coaches**

**6 Regent Circus (near G.P.O.)**

**Telephone Swindon 22731**

## HULFORD MOTORS Ltd.

### SELF DRIVE HIRE

Fleet of 1963 Fords  
Anglias De-Luxe - Cortinas  
De-Luxe - Zephyr 4s.

### SHRIVENHAM ROAD

(200 yards from Football Ground)

Phone 4934

Large Car Park available

For High Class  
Central Heating, Plumbing  
Painting and Decorating  
Electrical Installations  
and Repairs

## NORTH WILTS Sanitary & Heating Co. Ltd

**NEWPORT ST., SWINDON**

Phone 5373/4

## WARNES (Swindon)

**Electrical Contractors - Radio**

**Contractors to SWINDON TOWN**

**160 COUNTY ROAD, SWINDON  
9 SWINDON STREET, HIGHWORTH  
7 CLIVE PARADE, SWINDON**

RIGHT WING

SWINDON

Turner

Owen (2)

Troll

Morgan (4)

McPherson (5)

Summerbee (7)

Hunt (8)

Smith (9)

Ja

Swindon Colours:

RED SHIRTS, WHITE SHORTS

**FOOTBALL  
PINK**

Kirkup (11) McIlmoyle (10) Livingstone (9)

McConnell (6)

Marsden (5)

McBain (3)

Cald

Deal

LEFT WING

CARLISLE UNITED

## WARNES T.V.

**TO BE SURE**

**51 Commercial Road - Swindon**

**and Branches**



## **S (Swindon) LTD.**

Factors - Radio and Television

SWINDON TOWN FOOTBALL CLUB

SWINDON  
WORTH  
ON

PHONE 6346/7

PHONE 379

PHONE 6346/7

**SWINDON**

LEFT WING

Turner

(2) Trollope (3)

McPherson (5) Woodruff (6)

(1) Smith (9) Jackson (10) Weaver (11)

**FOOTBALL  
PINK**

These teams are subject  
to alteration

(10) Livingstone (9) Brayton (8) Dagger (7)

Marsden (5) Oliphant (4)

(3) Caldwell (2)

Dean

**CARLISLE UNITED**

RIGHT WING

## **S T.V. RENTALS**

**TO BE SURE**

Road - Swindon - Phone 6486

and Branches

## **McILROYS**

### **RESTAURANT**

for morning coffee,  
luncheon and  
afternoon tea - in  
pleasant surroundings -  
you will find McIlroys  
are top of the  
'league'.

Full table service, best Beers  
and Wines. Parties and  
Functions catered for.

### **McIlroys Restaurant**

64-72 Regent Street

Tel. 5294



THE ALCOHOL FUEL

### **COATE GARAGE**

REPAIRS - OVERHAULS - WELDING  
SERVICING - REBORING - TYRES

Props. E. V. & W. H. Mattick

Marlborough Rd., Swindon



## SUPPORTERS' CLUB NOTES

At the time of writing these notes (prior to the Bournemouth game), it appears that chances of promotion may have now been halved, as, apart from a sudden loss of form, Northampton would seem to have made certain of one place, leaving the remaining candidates to fight for the other.

We feel that some of the letters to the Press, regarding lack of reserve strength, have been unduly critical, and have ignored the unfortunate facts that the first team injuries have affected, mainly, three positions on each occasion—right back, outside left and centre forward. Few clubs could maintain a playing strength to cover the contingency of having three outside lefts on the injured list together.

Even some of the larger clubs—Tottenham Hotspur, for example—have recently been compelled to improvise and to play men out of their normal positions.

In the opinion of many supporters, the reorganisation of the Football Combination, a few seasons ago, was rather unfortunate, as the consequent reduction in the number of matches played by the reserve team made it an uneconomic proposition to maintain a large staff of experienced professionals in reserve, and, in any event, players of such calibre would be unwilling to join the club under such conditions.

We feel that the writers of the letters mentioned should bear these facts in mind, in fairness to the Management.

It was interesting to read in our local Press of plans for the development of the Ground. Here again, there have been critical letters in the Press asking for an improved team rather than for improvement in accommodation.



HAVE YOU **SIGNED ON** YET

FOR  
YOUR

# **SWINDON ECHO**

4d.  
**WEEKLY**

IF NOT THEN DO SO AT YOUR LOCAL NEWSAGENT  
AND JOIN OUR GROWING TEAM OF READERS

---

For your pleasure try

## **RIVERSIDE LECHLADE LTD.**

**Tea Room and Gardens - Boating**

4 Berth and 2 Berth Cabin Cruisers for hire, also Motor Boats,  
Camping Punts, Rowing Boats, Canoes, etc. Parties catered for.

PRIVATE CAR PARK

Telephone: Lechlade 229

---

## **Little & Co. Ltd.**

Try us for  
Clothes for all  
the family on  
all occasions

**31-32 FLEET STREET  
SWINDON**

Tel.

**22831**

**THE POPULAR MEN'S & LADIES'  
COMPLETE OUTFITTERS**

---

We have a  
reputation for  
**Value & Service**  
that is second  
to none

SEE THE LOVELY SELECTION OF  
**CHOCOLATES AND SWEETS**  
Greetings Cards a Speciality

## **CECIL GREEN**

**CONFECTIONER AND TOBACCONIST**

**13 VICTORIA ROAD**

Telephone 4416



## **SUPPORTERS' CLUB NOTES - continued**

There is more involved however, than the latter, which on a number of occasions has proved inadequate.

The dressing rooms, office and general appointments were once described to us by a visiting player as being "amongst the slums of the Football League".

Obviously, if something is to be done to remedy this, it must be part of a larger plan, for which the Development Fund was established by the Directors of Swindon Town F.C.

One further Press letter referred to the lack of encouragement forthcoming from Stratton Bank, as compared with the Town end. Naturally, the covered accommodation at the latter end helps to increase the volume of sound, while the English weather often reduces the number of supporters at the Stratton end, but we feel that they are no less enthusiastic than their opposite numbers.

Once again, we would remind supporters of our Dance to be held at Messrs. McIlroy's on Friday, 31st May (8 p.m. - 1 a.m.). Harry Smith's Band and "The Dukes" have been engaged.

Tickets at 5/- may be obtained from our Social Secretaries, Mr. and Mrs. W. Ranger, at our Headquarters or at 52 Medg-bury Road, Swindon.

As previously mentioned, during the course of the evening a further donation from our Competition profits will be made to the Directors of the Football Club.



F. J. ROPER  
DEVIZES RD.  
SWINDON

Phone 22341

FERNDALE  
FISHERIES  
FERNDALE RD.  
SWINDON

Phone 3614

**SWINDON'S  
FINEST  
FISH and CHIPS**

**CALL ON  
YOUR  
WAY  
HOME**

F. J. ROPER  
CLIFTONIAN  
38 WILLIAM ST.  
SWINDON  
Phone 3785

**WE SHALL BE  
WAITING  
TO  
SERVE YOU**

**Menu**

**Plaice  
Hake  
Cod  
Skate**

F. J. ROPER  
HIGH ST.  
WOOTTON  
BASSETT

F. J. ROPER  
CROSS HAYES  
MALMESBURY



# WILTSHIRE PREMIER LEAGUE

## Fixtures and Results to date

Date	Opponents	Ground	Result
August 18	RADSTOCK	(H)	1-1
22	PINEHURST	(A)	1-4
25	STONEHOUSE	(A)	3-0
29	PINEHURST	(H)	1-0
September 1	PURTON	(H)	3-1
8	CALNE	(A)	2-0
15	DEVIZES	(H)	6-1
19	FROME	(A)	1-3
22	TROWBRIDGE	(H)	2-0
29	FROME	(H)	3-0
October 6	WARMINSTER	(H)	3-1
13	PEASEDOWN	(A)	2-1
20	CLANDOWN	(H)	6-0
27	PAULTON	(A)	1-1
November 3	WESTBURY	(H)	5-4
10	MELKSHAM	(A)	0-3
24	CHIPPENHAM	(H)	6-1
December 1	WOOTTON BASSETT	(A)	4-1
8	PAULTON R.	(H)	5-2
15	STONEHOUSE	(H)	4-0
22	PURTON	(A)	5-0
29	CALNE	(H)	P

### 1963

January 5	DEVIZES	(A)	P
19	WARMINSTER	(A)	P
26	PEASEDOWN	(H)	20-1
February 2	CLANDOWN	(A)	P
16	WESTBURY	(A)	P
23	MELKSHAM	(H)	P
March 2	CHIPPENHAM TOWN	(A)	11-0
9	CLANDOWN	(A)	1-0
23	RADSTOCK	(A)	1-1
30	TROWBRIDGE	(A)	5-2
April 3	DEVIZES	(A)	3-1
6	MELKSHAM	(H)	3-1
10	SWINDON B.R.	(A)	3-0
13	WESTBURY	(A)	3-1
20	WARMINSTER	(A)	7-0
24	WOOTTON BASSETT	(H)	5-1



This space is reserved for

**EDWIN H. BRADLEY & SONS LTD.**

**Builders - Swindon**

---

***Eric***

(E. Ayliffe)

**GENTLEMEN'S HAIRDRESSER**

**57/59 Faringdon Road, Swindon.**

**Phone 4569**

**APPOINTMENTS MAY BE BOOKED IN PRIVATE SALON**

---

**ALSTON & YOUNG LTD.**

**121-123 CRICKLADE ROAD, SWINDON.**

**Tel. 6671**

**Scooter and Three-Wheeler Specialists**

**Main Agents - LAMBRETTA - VESPA - TROJAN**

**First class after sales service**

**Open daily 9.0 a.m. to 7.30 p.m.**

---

**SUPPORT YOUR HOME**

**CIVIL DEFENCE**

**Plays a vital part in saving lives  
in PEACE or WAR**

**Particulars:**

**CIVIC OFFICES, SWINDON**

---

**WISES CATERING  
SERVICE**

**(Reg. Wise)**

**Our Caterer for the past 14 seasons  
Guarantees**

**A GOOD CUP OF TEA AT THE  
COUNTY GROUND**

**A full range of Sweets & Cigarettes  
at any of our five kiosks on your  
way in. ENJOY YOURSELF!**



## FOOTBALL COMBINATION LEAGUE TABLE

	P.	W.	D.	L.	F.	A.	Pts.
Chelsea ... ..	32	18	9	5	65	32	45
Birmingham City ... ..	27	14	7	6	60	27	35
Brighton & H.A. ... ..	27	15	2	10	45	40	32
Millwall ... ..	24	13	4	7	48	29	30
SWINDON TOWN ... ..	28	11	7	10	56	51	29
Coventry City ... ..	24	10	7	7	42	33	27
Portsmouth ... ..	27	11	5	11	55	47	27
Bournemouth ... ..	27	9	9	9	42	50	27
Leyton Orient ... ..	25	11	3	11	56	47	25
Watford ... ..	26	9	7	10	54	54	25
Southampton ... ..	21	10	4	7	37	30	24
Fulham ... ..	27	9	6	12	37	51	24
Brentford ... ..	26	9	5	12	46	52	23
Southend Utd. ... ..	29	9	5	15	60	73	23
Q.P.R. ... ..	24	8	5	11	42	49	21
Aldershot ... ..	26	9	3	14	35	57	21
Charlton Athletic ... ..	27	9	1	17	46	82	19
Reading ... ..	27	5	7	15	41	63	17



# **BRETTS** PET AND GARDEN SUPPLIES

**32-33 COMMERCIAL ROAD**

and

**6 CROMWELL STREET - SWINDON**

---

When thinking of your new  
T.V. - Radio - Washing Machine - Refrigerator  
make your **GOAL**

## **HOLMES & LUCAS**

**14 REGENT STREET - SWINDON**

Stockists of all leading makes

Telephone 22526-4721

---

FOR ALL YOUR ANGLING NEEDS  
CONSULT

### **FRANK WOODWARD**

Swindon's Fishing Tackle Specialist

**25 HAVELOCK ST., SWINDON**  
PHONE 3879

For Paints of Good Quality

### **H. S. HODGES & SONS**

(SWINDON) LTD.

**CRICKLADE RD. - SWINDON**  
PHONE 22422

Dulux, Brolac, Friary, Valspar,  
Wallcharm, etc.

---

### **SOUTHERN LAUNDRY**

**Co. Ltd.**

Launderers and Dry Cleaners

**STATION ROAD - SWINDON**  
**TELEPHONE 4161**

### **COMLEY'S**

Modern Music Centre

**26 HAVELOCK ST., SWINDON**

RECORDS - MUSIC - INSTRUMENTS

Top Twenty 'Pops' always in stock  
and wide selection of Jazz & Classics

Personal Supervision      Phone 3874



# FOOTBALL COMBINATION

## Fixtures and Results to date

Date	Opponents	Ground	Result
August 18	SOUTHEND	(H)	3-1
21	MILLWALL	(A)	1-2
25	BOURNEMOUTH and B.A.	(A)	3-1
September 1	CHELSEA	(H)	0-2
3	WATFORD	(A)	2-2
18	QUEEN'S PARK RANGERS	(H)	3-2
26	SOUTHAMPTON	(A)	3-3
October 23	COVENTRY CITY	(H)	2-0
27	ALDERSHOT	(H)	0-0
November 7	LEYTON ORIENT	(A)	3-6
10	BRIGHTON	(H)	1-0
27	BRENTFORD	(H)	2-2
December 8	CHARLTON	(A)	2-2
11	FULHAM	(H)	6-1
19	PORTSMOUTH	(A)	3-1
22	BIRMINGHAM	(A)	0-3
<b>1963</b>			
January 1	READING	(H)	P
9	READING	(A)	P
15	BOURNEMOUTH and B.A.	(H)	3-1
19	SOUTHEND	(A)	P
29	WATFORD	(H)	P
February 4	QUEEN'S PARK RANGERS	(A)	P
6	CHELSEA	(A)	0-3
9	BIRMINGHAM	(H)	4-2
12	MILLWALL	(H)	3-3
26	SOUTHAMPTON	(H)	0-0
March 6	COVENTRY CITY	(A)	P
9	ALDERSHOT	(A)	P
11	SOUTHEND UNITED	(A)	3-1
19	LEYTON ORIENT	(H)	3-1
23	BRIGHTON	(A)	0-1
April 6	PORTSMOUTH	(H)	1-2
9	BRENTFORD	(A)	1-2
16	CHARLTON	(H)	0-3
22	FULHAM	(A)	3-4
May 7	READING	(H)	
11	QUEEN'S PARK RANGERS	(A)	
18	READING	(A)	
15	WATFORD	(H)	



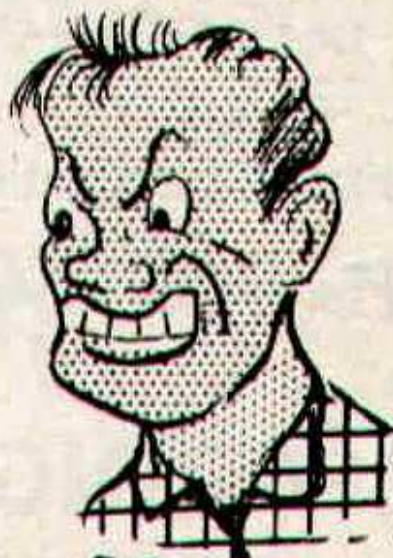


# *At the FINAL WHISTLE*

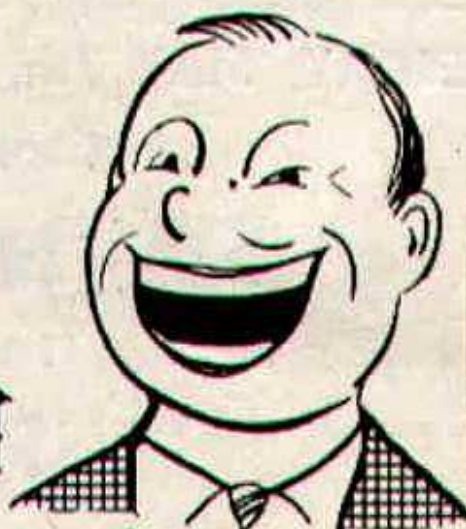
WHETHER YOU FEEL



*Sad*



*Mad* or



*Glad*

**PLEASE  
DO NOT CROSS THE  
PLAYING PITCH**



## **FORTHCOMING MATCHES**

**SATURDAY, MAY 4th, 1963**

Division III

**SWINDON TOWN**

*v.*

**HALIFAX**

Kick-off 3 p.m.

---

**TUESDAY, MAY 7th, 1963**

Football Combination

**SWINDON TOWN**

*v.*

**READING**

Kick-off 7.30 p.m.

---

**THURSDAY, MAY 9th, 1963**

WESSEX YOUTH LEAGUE

**SWINDON TOWN**

*v.*

**OXFORD**

Kick-off 7.30 p.m.



**G. A. STREETLY**

**Tobacconist and Confectioner**

**10 BOURNE ROAD - MOREDON - SWINDON**

**Telephone: 4956**

---

**ADVERTISING SPACE**  
**IN THIS PROGRAMME**  
**TO LET**

**Apply:-**

**SECRETARY,  
SWINDON TOWN F.C.,  
COUNTY GROUND, SWINDON**



Have you purchased your ticket for the

# **DEVELOPMENT FUND COMPETITION?**

**TICKETS 1/- each**

**Draw at half-time Saturday for**

**£100**

**other Prizes Monday to Friday**

**£20 EACH DAY**

Results published daily in -

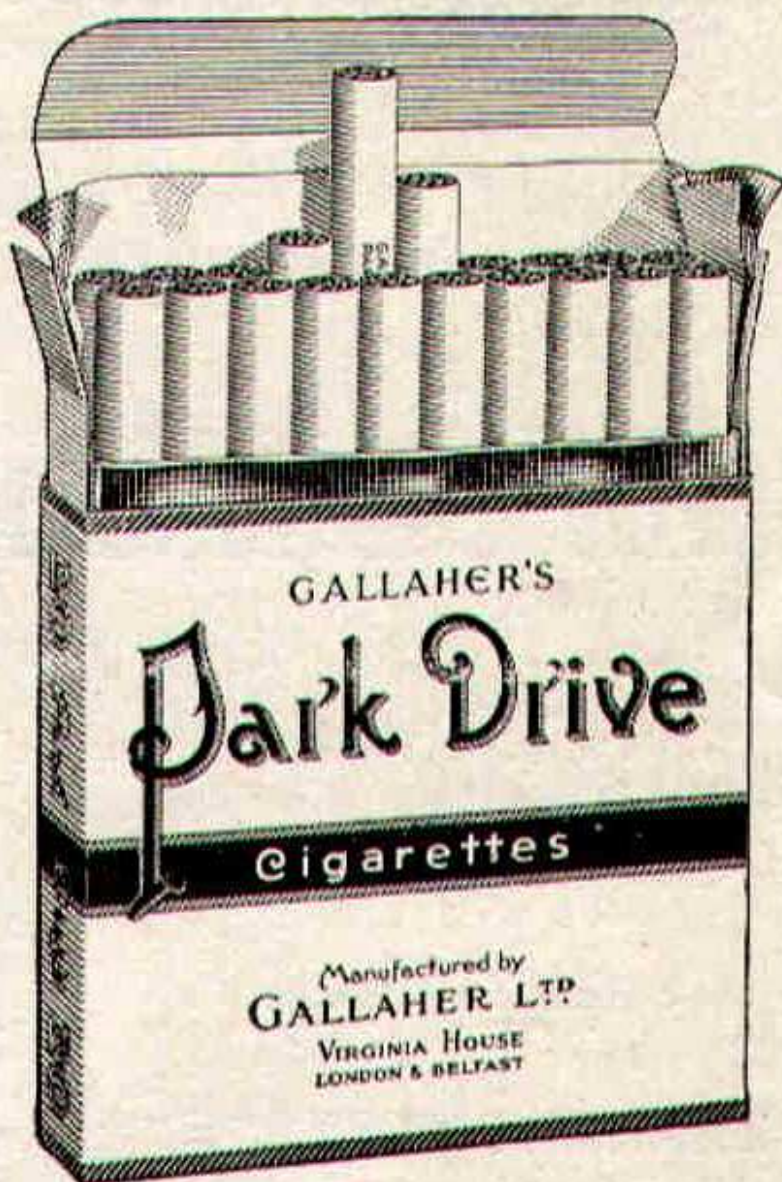
"Daily Sketch"

"Evening Advertiser" and

"Bristol Evening Post"



# PARK DRIVE



for pleasure

**PLAIN OR TIPPED**



# PLAYERS APPEARANCES AND GOAL SCORERS

## Div. III FA & Lge Cups

### App. Goals App. Goals

Turner  
O'Hara  
Wollen  
Trollope  
Morgan  
Owen  
Woodruff  
Summerbee  
Darcy  
Hunt  
Jackson  
Smith  
Smart  
McPherson  
Atkins  
Stevens  
Rogers  
Chamberlain  
Dawson  
Huxford  
Harber  
Weaver

30  
10  
21  
40  
40  
24  
38  
31  
24  
37  
37  
40  
7  
24  
6  
8  
6  
1  
10  
1  
2  
3

-  
-  
-  
1  
-  
-  
2  
6  
5  
20  
14  
19  
2  
-  
-  
5  
2  
-  
-  
-  
-  
-  
1

6  
-  
4  
6  
6  
4  
6  
6  
3  
6  
6  
6  
-  
4  
-  
-  
3  
-  
-  
-  
-  
-

-  
-  
-  
-  
-  
-  
-  
-  
3  
4  
6  
-  
-  
-  
-  
-  
-  
-  
-  
-  
-  
-

## Football Combination

### App. Goals App. Goals

O'Hara  
Hicks  
Turner  
Hellin

15  
4  
7  
24

-  
-  
-  
-

## Football Combination

### App. Goals App. Goals

Dawson  
Smart  
McPherson  
Harber  
Shergold  
Darcy  
Stevens  
Leggett  
Weaver  
Rogers  
Colsell  
Atkins  
Summerbee  
Mellor  
Leyton  
Jackson  
Huxford  
Owen  
Peapell  
Trollope  
Morgan  
Woodruff  
Hunt  
Chamberlain  
Smith  
Tabor  
Plumb  
Collins  
Lloyd

21  
23  
8  
25  
24  
4  
23  
24  
11  
17  
4  
16  
4  
3  
1  
4  
17  
6  
2  
1  
1  
1  
1  
7  
1  
2  
4  
2  
1

-  
6  
-  
-  
-  
1  
20  
5  
4  
2  
-  
7  
2  
-  
-  
2  
-  
-  
-  
-  
-  
-  
-  
1  
2  
1  
-  
-  
-



## STAND TICKETS

Tickets for seats in the Old and New Stands may be booked in advance. Postal applications should be accompanied by a remittance and stamped addressed envelope. Tickets ordered by telephone must be collected not later than 12 noon on the day of the match, otherwise they will not be reserved.

Prices for League Matches:-

**New Stand:** Block C-6/6 (Centre)

Blocks B and D-5/6 (Side Stands)

Blocks A and E-4/6 (Wing Stands)

**Old Stand:** Centre Box-8/-

Block H-5/6 (Centre)

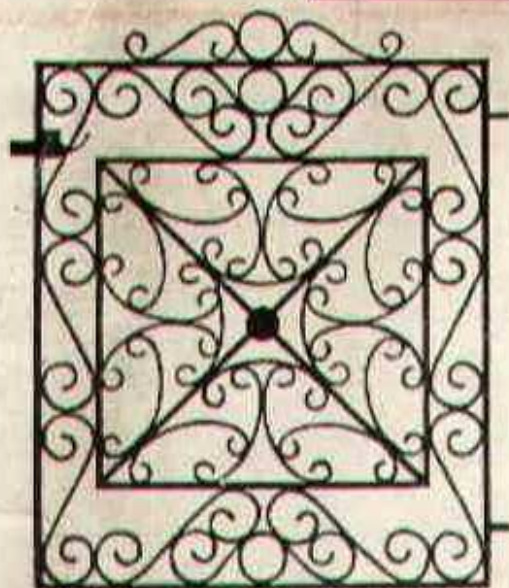
Blocks F, G and I-4/- (Side Stands)

Postal applications to: Secretary, Swindon Town F.C., County Ground, Swindon, Wilts. Telephone Swindon 22118.

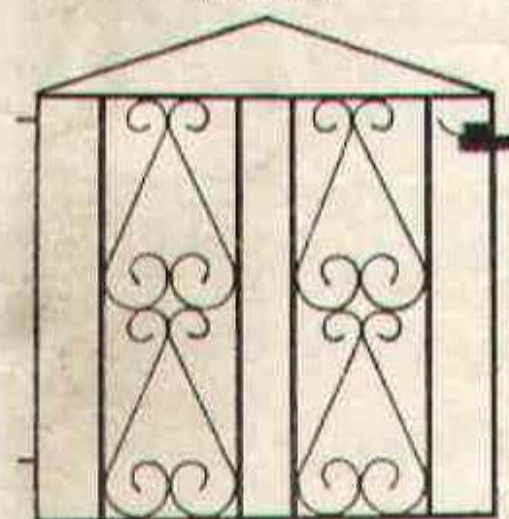




*Gatemaster*



T.G. 621



T.G. 626

**Gates from 58/-**  
Singles and Doubles

If you live in the Swindon  
area we will measure your  
Gateway for you.

---

Our Decorative Ironwork  
also includes:

FIRESCREENS  
COFFEE TABLES  
LAMPS  
BRACKETS  
CORNER TABLES  
BALUSTRADES

SEND FOR FREE CATALOGUE  
**MARTYN LYNshaw LIMITED**

20 Boundary Works, Stratton Road,  
SWINDON. TEL. 4177